

"PCI" Series

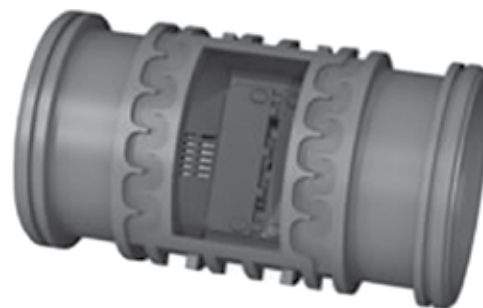
Pressure Compensating Inline Drip Tubing



Features

- Unique flow regulating concept: wide effective labyrinth, leading into the flow control chamber, where a sensitive floating diaphragm regulates and maintains a constant flow rate at variable inlet pressure.
- High clog resistance:
 - Dropper's large intake filter is continuously flushed by the water flow.
 - Large cross section on labyrinth.
 - Self-cleaning mechanism at the flow regulated water outlet.
- Uniform flows from 7–60 PSI
- Manufactured from durable plastics for long service life.
- Multi-season use.
- Available in a standard, custom or skip spacing.

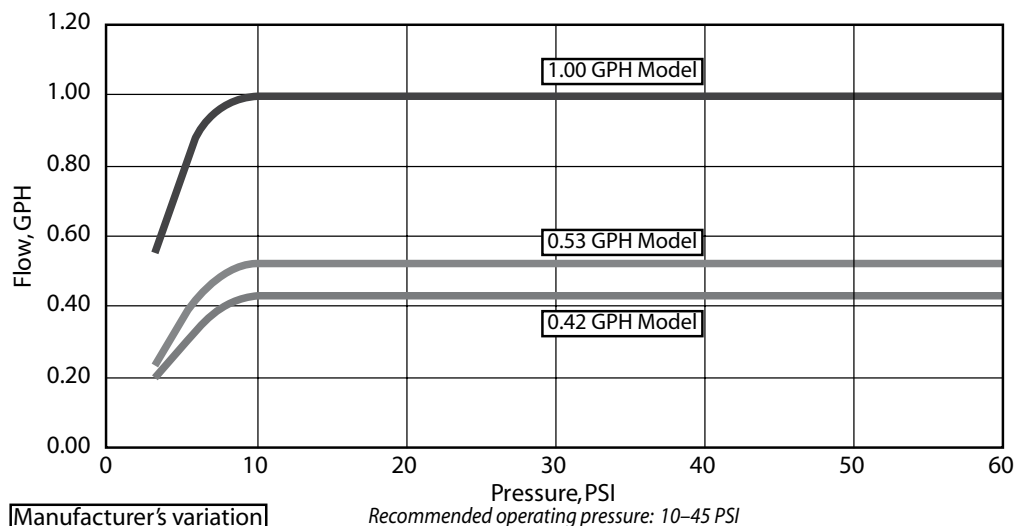
Minimum Filtration: 150 mesh



Tubing specifications

O.D. mm (in.)	I.D. mm (in.)	Avg. Wall Thickness mm (in.)
16 (0.640)	14 (0.560)	1.02 (0.040)
18 (0.710)	16 (0.625)	1.08 (0.0425)
20 (0.790)	18 (0.700)	1.14 (0.045)

Emitter Flow Performance



Manufacturer's variation
(Cv): ≤ 0.04