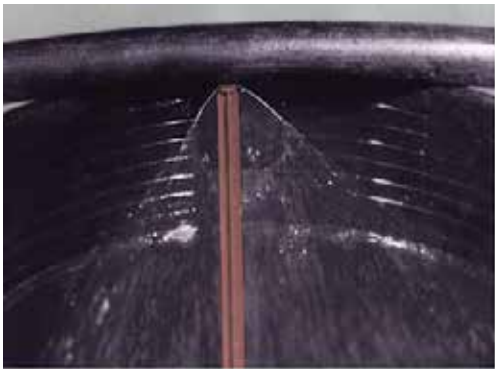


Jet Stake™

Spray Stake for Nursery or Landscape



The Jet Stakes barbed inlet attaches securely to supply hose or distribution tubing.

Product Features

- Rabbit / Rodent resistant: when the Jet Stake is attached directly into the supply hose, feeder tubing is eliminated. Therefore virtually all damages caused by rabbits or rodents are eliminated also.
- 0.165" (4.2mm) barb inlet for secure connections to PE supply hose or distribution tubing ("0.160" [4.0mm] I.D. distribution tubing recommended).
- Overall length of 6 3/8" (16.2cm) insures stability when inserted into loose dirt or potting soil.
- Thread size at tapered end designed to quick-turn into "0.160" (4.0mm) I.D. tubing for shutoff at the watering site.
- Excellent distribution uniformity.
- High-grade resins in manufacture for mechanical stability and durability.

Standard models color-coded by flow rate:

- 3.5 GPH ~ yellow
 - 5.5 GPH ~ brown
 - 6.1 GPH ~ black
 - 8.6 GPH ~ orange
- (Nominal flow rates @ 20 PSI)
- Ideal for 5, 7, 10 or 15-gallon pots.
 - Excellent distribution uniformity.
 - UV inhibitors for long life.

Flow Rate vs. Pressure							
Stock #	Flow @ 20 PSI Nominal	Jet Stake Color	Pressure, PSI				
			10	20	30	40	50
1081	5.5	Brown	3.9	5.5	6.8	7.9	8.9
1082	6.1	Black	4.3	6.1	7.5	8.8	9.7
1083	8.6	Orange	6.0	8.6	10.6	12.2	13.5
1085	3.5	Yellow	2.5	3.5	4.3	4.9	5.5

